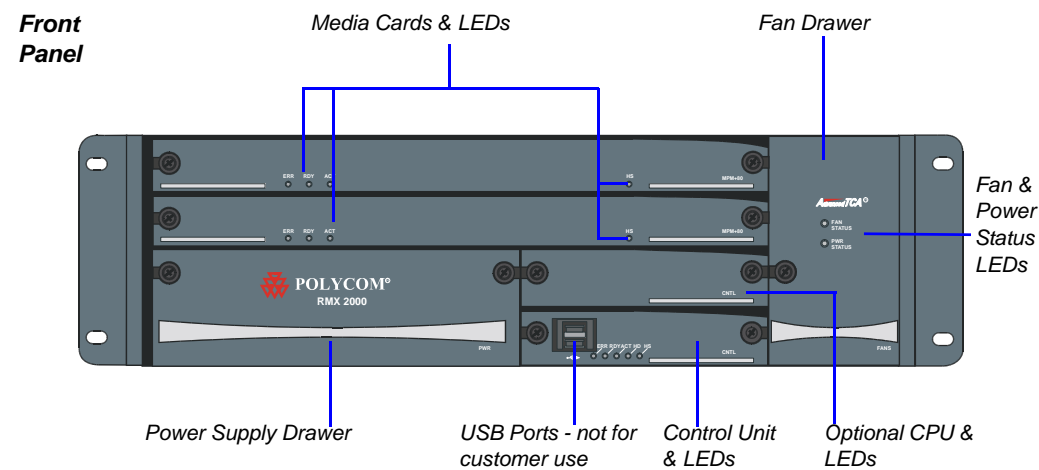


# Installation Quick Start Guide for RMX 2000

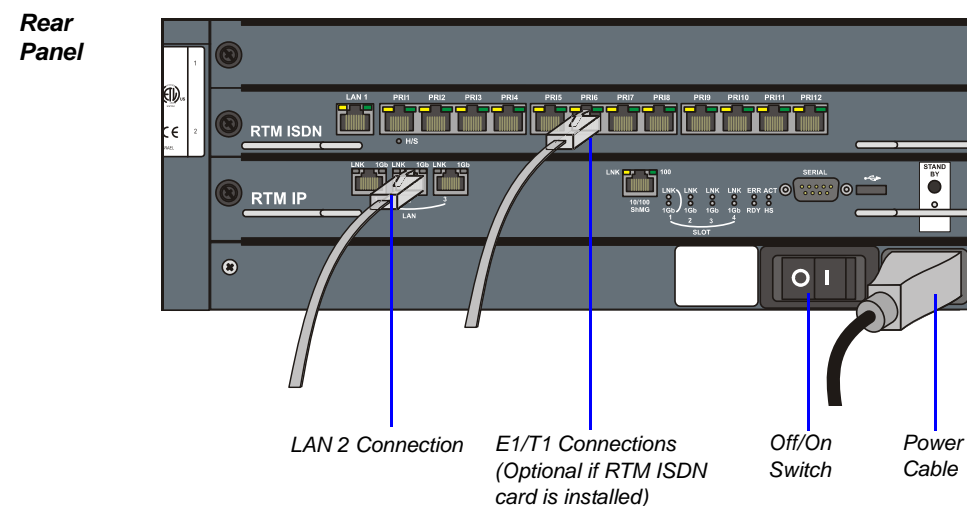
## Basic Setup



Before installing the RMX 2000 and performing the Basic Setup, please read the General Safety Precautions described in the *Polycom RMX 2000 Hardware Guide*. If your system package includes the RTM ISDN card, it is recommended to install it before mounting the RMX on the rack. Refer to the RMX 1500/2000/4000 Getting Started Guide for Installation instructions.



>> Connect the cables to the rear panel of the RMX 2000 as described below:



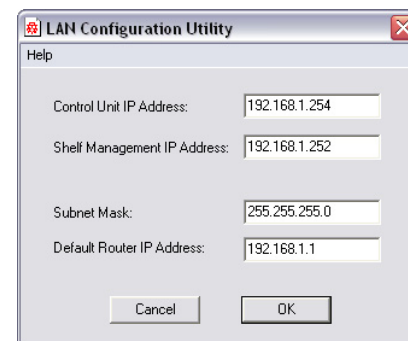
Do not remove the protective plastic caps from LAN1, LAN3 and ShMG ports.

## Configuring the LAN Properties on the USB Key

- 1 Insert the *USB key* provided with your system into the PC workstation. The *Polycom Documentation* window opens.  
In **Windows XP**:  
a The **Polycom Documentation** option is automatically selected. Click **OK**.  
In **Windows 7**:  
a Select **Open Folder to view files using Windows Explorer**.  
b Double-click the **index.hta** file.  
The *Language Menu* opens.
- 2 Select the documentation language.
- 3 In the *License Agreement* window, click the **Accept Agreement** button.
- 4 In the *Initial Setup Utility*, click the **RMX Lan Configuration Utility** hyperlink.



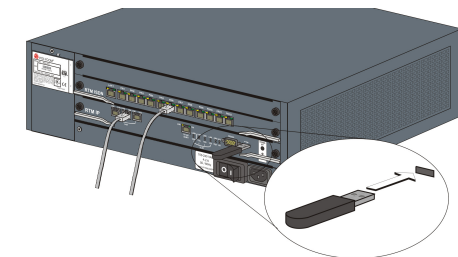
The *LanConfigUtility* dialog box opens.



- 5 Modify the parameters in the utility's dialog box using the information supplied by your network administrator.
- 6 Click **OK**.
- 7 Remove the *USB Key* from the PC.

## First-time Power-up and Connection to MCU

- 1 Insert the *USB Key* containing the modified IP addresses in the *USB* port on the RMX's back panel.

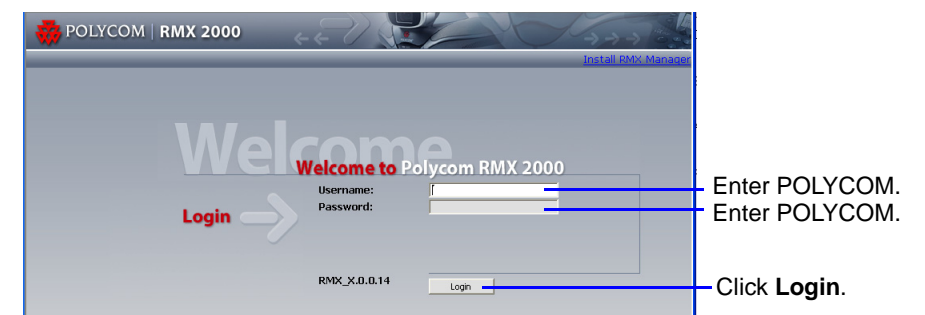


- 2 Power the RMX **ON**. The **FAN STATUS** and **PWR STATUS** LEDs turn ON. System power-up sequence may take approximately 10 minutes. During this time, the parameters in the **lan.cfg** file are uploaded from the USB key to the RMX's memory and applied during the power-up sequence. Wait for the upload process to complete. Initially all the **ERR/RDY/ACT** LEDs flicker and flash. Upload is completed when all the LEDs turn off and only the red **ERR** LED (on the **CTNL** unit) remains ON. It remains ON until the *Default IP Network Service* is configured.

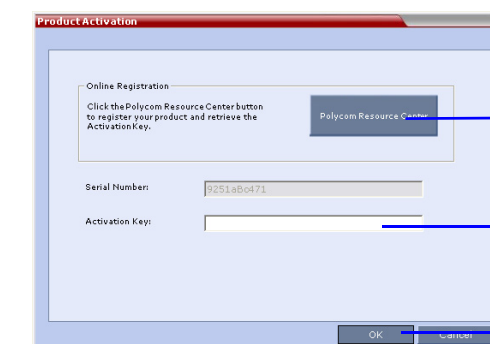
In the browser, enter the IP address of the RMX Control Unit and press Enter.



- 3
- 4 Once the *RMX Welcome* screen is displayed, remove the *USB key* from the RMX.



- 5
  - 6
- Click to connect to Polycom web site and register the RMX. Click **Product Registration** and follow the on screen instructions to obtain the *Product Activation Key*. Enter or paste the *Product Activation Key* obtained. Click **OK**.



The *Media* card **ERR/RDY/ACT** LEDs flicker, until only the **RDY** LED turns ON.

## Modifying the Default IP Service

This section describes the definition of H.323 Network Service. For detailed description of H.323, SIP and ISDN Network Service definitions, see the *RMX Getting Started Guide*, “First Time Installation and Configuration”.

On the RMX 2000, IPv4 is the default protocol for setting the Network Service in the *Fast Configuration Wizard*.

In the *Fast Configuration Wizard*, select **Next** to move from one window to another.

1

Change the default service name if required.

Enter the address to be used by IP endpoints when dialing in to the MCU.

Enter the IP address(es) of the media card(s).

Enter the subnet mask of the MCU.

2

Enter the IP address of the default router.

3

Enter the name of the MCU on the network.

Optional. Select **Specify** to define a DNS server.

Optional. Define the DNS server properties:

- Registration mode
- The name of the MCU domain
- The static IP address of the primary DNS server

4

Select **H.323** as the IP Network Type.

Select **Specify** to configure the gatekeeper parameters.

Enter gatekeeper's host name or IP address.

Enter the string with which the MCU registers itself with the gatekeeper.

Enter the alias that identifies the RMX's Signaling Host within the network. Up to five aliases can be defined for each RMX.

5

Optional. Modify the default settings of the system flags that define the general system behavior such as the number of digits in the conference ID assigned by the MCU.

These flags can be modified later, if required, by selecting the *System Configuration* option from the *Setup* menu.

6

In the IP Network Service creation confirmation, click **OK**.

7

Click **Save & Close**.

8

In the *Success Message* box confirming successful configuration, click **OK**.

9

In the *Reset Confirmation* dialog box, click **Yes**.

10

In the *Please wait for system reset* message box, click **OK**.

11

**System restart may take up to five minutes.**

12

Refresh the browser periodically until the Login screen is displayed and *Login*. In the *Main Screen* an *MCU State* indicator displays the time remaining until the system start-up is complete.

MCU Status remains in *Major* and the red ERR LED on the RMX front panel remains ON until the default RMX User is replaced with a new *User* and the *RMX Time* is set:

- 13 Create a new **User** with Administrator permissions. For more information see the RMX 1500/2000/4000 Administrator's Guide, "Adding a New User" on page 14-4.
- 14 Set the RMX time (**Setup > RMX Time**) and click **OK**. For more information, see the RMX 1500/2000/4000 Administrator's Guide, "RMX Time" on page 19-41.
- 15 Logout and Login using the new User name and password and then delete the default User (POLYCOM).

When the above steps are completed and if there are no *System Errors*, the green RDY LED on the RMX's front panel turns ON and the red ERR LED turns OFF.

## Connecting to a Conference Directly or via Entry Queue

The RMX is shipped with pre-configured default conferencing entities that can be used to dial in and start conferences. Default (Transit) Entry Queue ID: 1000, default Meeting Room IDs: 1001, 1002, 1003, and 1004.

### H.323 Participants

Dial: [MCU Prefix in Gatekeeper][Conference or Entry Queue ID/Name]

For example, if the MCU prefix in gatekeeper is 925, enter 925 or 9251000 to connect to the EQ or 9251001/2/3/4 to connect directly to the conference. When connected to the EQ, enter the destination Meeting Room ID (i.e. 1001, 1002, 1003 or 1004). Alternatively, use the EQ or conference name. For example, if the conference name is Maple\_Room, the participant can dial: 925Maple\_Room.

### SIP Participants

Dial: **conference\_routing\_name@domain\_name**. Conference routing name must be registered with the SIP server. For example, enter 1001@polycom.com if conference routing name is 1001 and the domain name is polycom.com.

### ISDN and PSTN Participants

Dial one of the numbers assigned to the conference, Meeting Room or Entry Queue with the required country and area code. When connected to an EQ you are routed to the conference according to the destination conference ID you enter. For example, if the conference assigned dial in number is 4045555, dial this number with the appropriate area code (for example, 678) and country code (001).

## Conference Control Using DTMF Codes

Operation	DTMF String	Operation	DTMF String
Play Help Menu	*83	Request private assistance	*0
Mute My Line	*6	Request assistance for conference	00
Unmute My Line	#6		
Increase Broadcast Volume	*9	Increase Listening Volume	*76
Decrease Broadcast Volume	#9	Decrease Listening Volume	#76
Invite Participant	*72	Change To Chairperson	*78
Start Click&View to modify personal layout	**	Show Number of Participants	*88

2

DOC2665A